



1, 2 & 3 BEDROOM LUXURY APARTMENT HOMES

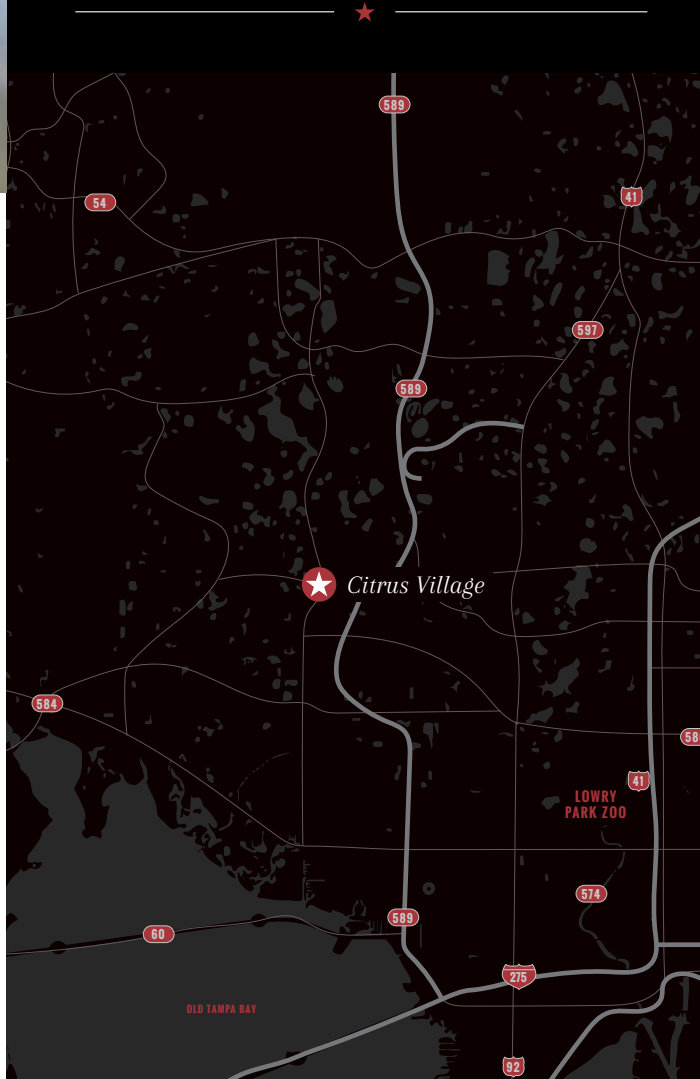
FEATURES & AMENITIES

42" raised-panel modern kitchen cabinets | Air conditioning | Alarm system available | Ceiling fans | Dramatic 9' vaulted ceilings | Dual vanities* | **Energy efficient lighting** | Energy efficient windows | **Energy Star appliances** | Full size washer & dryer in each home | **Garages** | Granite kitchen countertops & ceramic backsplash | Microwaves | Modern track lighting | Personal balcony or patio with french doors | **Programmable thermostats** | **Roman soaking tubs*** | Spacious walk-in closets | **Stand up showers*** | All access fitness center | **Easy access to Veterans Expressway, I-275 & I-4** | Luxurious resident lounge with game center | **Barbeque grill** | Resort-inspired pool with cabanas | **Bark park** | Wi-Fi café

* In Select Homes



CLOSE TO IT ALL



CITRUS VILLAGE
A PREFERRED APARTMENT | COMMUNITYSM
★ ★ ★ ★ ★



813.920.8001

7940 Citrus Garden Dr. | Tampa, FL 33625

CitrusVillageApts.com

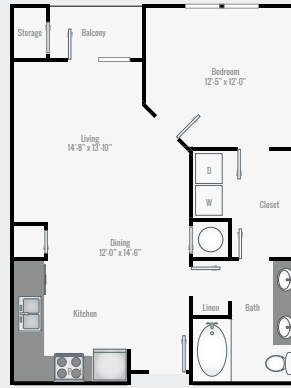
LIVE, WORK, RELAX



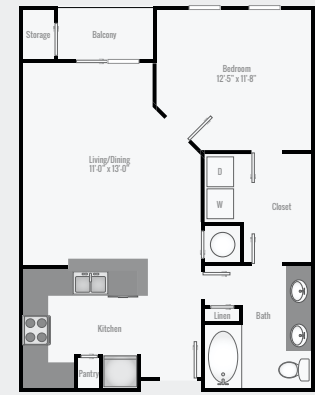
Citrus Village is for those who desire convenience and a beautiful array of services in the best location in town!

You'll love calling Citrus Village home! Our distinct community features one, two and three bedroom apartment homes. Generous living spaces give you the freedom to design and customize your home. Enjoy entertaining your friends and family in a gourmet kitchen with designer appliances and finishes.

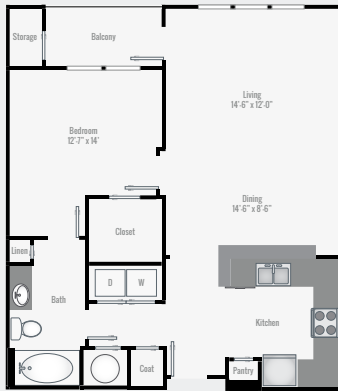
Citrus Village is a one-of-a-kind experience you simply won't want to miss!



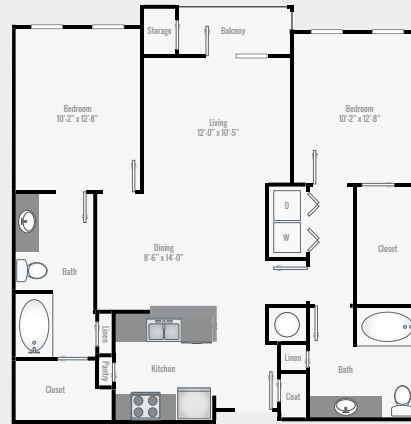
SANTA ROSA 1 BR | 1 BA | 771 SF



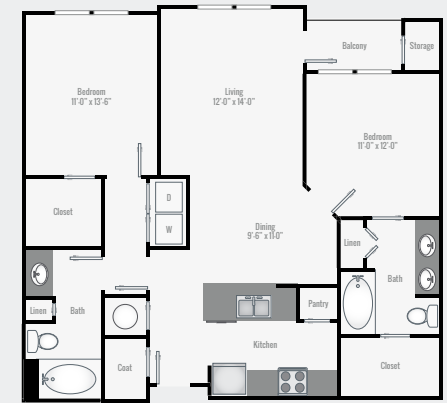
SARASOTA 1 BR | 1 BA | 721 SF



COLLIER 1 BR | 1 BA | 842 SF



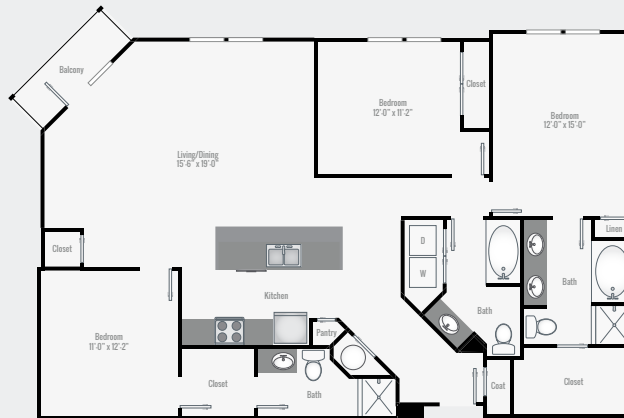
SADDLEBROOK 2 BR | 2 BA | 1,096 SF



RIVERGLEN 2 BR | 2 BA | 1,115 SF



NORTHDALE 2 BR | 2 BA | 1,147 SF



WELLINGTON 3 BR | 3 BA | 1,628 SF



VALENCIA 3 BR | 2 BA | 1,658 SF